

Tap the hidden, Tap your talent 3.0 BDF200051

1/8/2021 – 31/7/2023

Department of Psychiatry, Alice Ho Miu Ling
Nethersole Hospital, Tai Po Hospital and North
District Hospital



Introduction

- Hidden Substance Abuse is still a social concern
- Up to 60% of substance abusers have psychiatric problems simultaneously
- High carer stress were observed

Proactive action is necessary



Aim

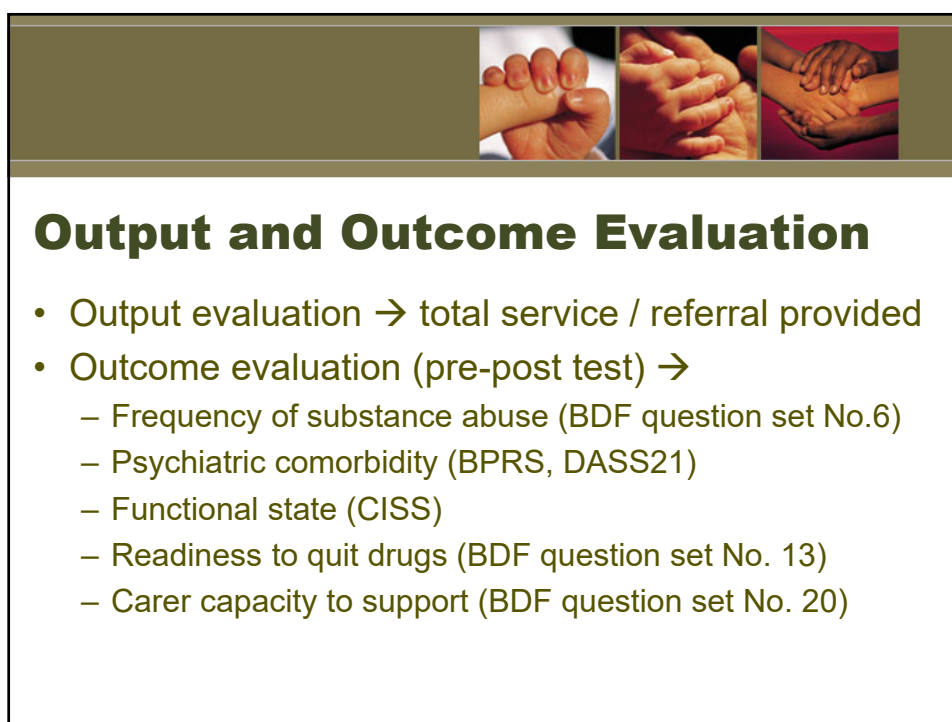
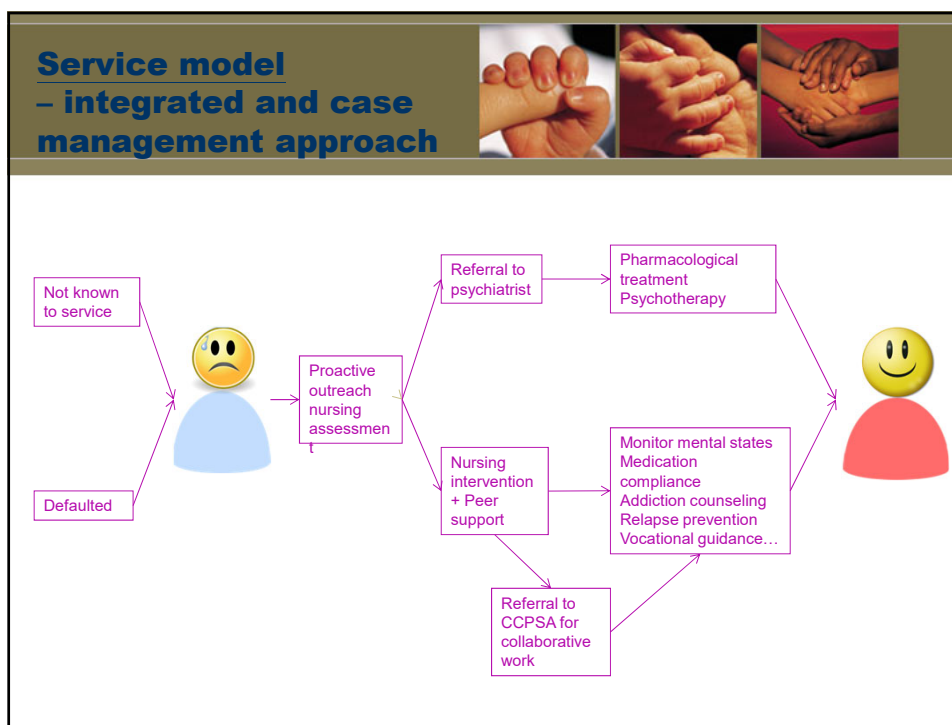
- Early engagement
- Early assessment
- Early intervention
- Early referral

An extension project for other two projects,
Tap the hidden, Tap your talent (BDF140009)
and Tap the Hidden, Tap Your Talent 2.0 (BDF170047)



Project Content

- Provide comprehensive assessment, outreach counseling and treatment to substance abuser and/or their carer
- Refer substance abuser and their carers to community networks





Output Benchmarks & Evaluation Results

	Expected Result	Achieved Result
Assessment to substance abusers	100 assessment to substance abusers	96 assessment to substance abusers (96% of target)
Assessment to carer of substance abusers	50 assessment to carers of substance abusers	75 assessment to carers of substance abusers (150% of target)
Outreach services to substance abusers	600 outreach services for 100 substance abusers	831 outreach services (138.5% of target) for 94 substance abusers (94% of target)
Outreach services to carer of substance abusers	300 outreach services for 50 carers of substance abusers	284 outreach services (94.7% of target) for 65 carers of substance abusers (130% of target)
Refer to community networks	30 referrals	27 referrals (90% of target)



Outcome Benchmarks & Evaluation Results

	Expected Result	Achieved Result
Reduce frequency of substance abuse	70% of substance abuser reduce the frequency of substance abuse	87.4% of evaluated substance abusers reduce the frequency of substance abuse
Improve in psychiatric comorbidity	70% of substance abusers improve in psychiatric comorbidity	88.5% of evaluated substance abusers improve in BPRS 90.8% of evaluated substance abusers improve in DASS21
Improve in functional states	70% of substance abusers improve in functional states	95.4% of evaluated substance abusers improve in functional states
Improve in readiness to quit	70% of substance abusers improve in readiness to quit substance abuse	95.4% of evaluated substance abusers improve in readiness
Improve in capacity to support drug abusing family members	70% of carers of substance abusers improve in capacity to support SA family members	94.6% of carers of substance abusers improve in capacity



Experience Gained

- The existing service model demonstrate effectiveness to improve psychiatric outcomes and substance abuse outcome for substance abusers and carers
- It has been applied in the practice in SA nursing service in New Territories East Cluster in Hospital Authority



Conclusion

- The proactive integrated and case management approach can effectively engage, assess and intervene substance abusers and their carers
- This approach seemed applicable to different hospital-based or NGO-based services

