



香港善導會  
The Society of Rehabilitation and  
Crime Prevention, Hong Kong


**Project CARE**  
(Community-based Treatment and Rehabilitation  
Support Service for Ethnic Minorities)  
**(BDF 120012)**



禁毒基金  
BEAT DRUGS  
FUND

**1<sup>st</sup> April 2013 – 31<sup>th</sup> March 2016**

改變 **本** 相 成就 **未** 來



香港善導會  
The Society of Rehabilitation and  
Crime Prevention, Hong Kong


## Introduction

To fulfil the rising needs of drug treatment service in the EM population, SRACP was committed to supporting them with community-based, one-stop, cultural-sensitive, multifarious service to them.

Objectives:


- To provide cultural sensitive, one-stop drug treatment support service for EM drug abusers.
- To provide community-based rehabilitation support service for those who are recovered from drug abuse and support them staying abstinence.

改變 **本** 相 成就 **未** 來


 香港善導會  
 The Society of Rehabilitation and  
 Crime Prevention, Hong Kong


## Project Content

- Outreach program


- To outreach to drug abusers, ex-drug abusers and at-risk youths.
- To collaborate with community counterparts to promote our service and healthy lifestyle to the community members.


改變  本 相 成 就 未 來


 香港善導會  
 The Society of Rehabilitation and  
 Crime Prevention, Hong Kong

## Project Content


- Drug Counselling
  - To provide drug counselling with case work and care plan follow-up
  - Motivate clients to engage in detoxification service
- Relapse Prevention Counselling
  - Individual-based or group-based relapse prevention counselling service with case work follow-up service
  - Aftercare service to drug abuser cases after detox or to ex-drug abuser cases after intake, including counselling, urine drug test, consolidation and termination counselling


改變  本 相 成 就 未 來

 香港善導會  
The Society of Rehabilitation and  
Crime Prevention, Hong Kong

## Project Content

- Community-based Treatment Support with Medical Supervision & Care Plan Review
  - Develop care plan with clients and medical professionals before completion of detoxification
  - Supervise clients' care and medication compliance plan after completion of detoxification program
  - Provide health check and health education services to clients
  - Timely review and fine-tuning of care plan

改變  本 相 成就 未 來

 香港善導會  
The Society of Rehabilitation and  
Crime Prevention, Hong Kong

## Project Content


- Lifestyle change program & employment






- To provide finance and counselling support for clients to manage their housing, employment, health risk, finance, daily life and leisure needs.
- To provide employment support.


改變  本 相 成就 未 來

 香港善導會  
The Society of Rehabilitation and  
Crime Prevention, Hong Kong


## Project Content

- Induction program





- To enhance self awareness of our service users towards their body condition and drugs through health check-up and health talk.
- To enhance motivation and prepare drug abusers to treatment program.

改變  本相 成就 未來

 香港善導會  
The Society of Rehabilitation and  
Crime Prevention, Hong Kong

## Project Content

- Social Rehabilitation program





- To enhance awareness of our service users towards positive and healthy lifestyle.
- To engage service users with positive peer influence.

改變  本相 成就 未來

 香港善導會  
The Society of Rehabilitation and  
Crime Prevention, Hong Kong

## Project Content

- Social Inclusion program





- To develop a positive role and identity to the ex-drug abusers.
- To engage and integrate service users into programs with the community members to enhance social acceptance.

改變  本相 成就 未來

 香港善導會  
The Society of Rehabilitation and  
Crime Prevention, Hong Kong

## Project Content

- Family program





- To enhance the resilience of drug abusers' family members or concerned significant others.

改變  本相 成就 未來

## Output Evaluation

### ➤ Evaluation methods and Benchmarks

- Data retrieved from participants enrolment / registration record for output indicators / activity
  1. No. of EM prisoners and court defendants, at-risk youths and community members during outreach activities and mass program. **(4,500 man-time)**
  2. No. of EM active drug abusers received drug counselling **(150 person)**
  3. No. of EM ex-drug abusers received relapse prevention counselling (including 150 EM rehabilitees carried from Indicator 2) **(450 person)**
  4. No. of EM drug abusers received community-based treatment support with medical supervision and care plan review **(90 person, 270 man-times of review)**
  5. No. of EM drug abusers / ex-drug abusers participated in Lifestyle change program and Pre-vocational training and job matching **(360 man-time)**




## Outcome Evaluation

### ➤ Evaluation methods and Benchmarks

- Follow-up Interview with participants
  1. No. of EM drug abusers comply to the post-detoxification medication and community medication plan **(40%)**
  2. No. of EM ex-drug shows improvement in employment status after receiving social rehabilitation service (including Life Style Change Programme & Pre-vocational Training and Job Matching) **(40%)**








**香港善導會**  
 The Society of Rehabilitation and  
 Crime Prevention, Hong Kong

## Evaluation results (Output indicators)


	Description of output indicators (with expected result)	Actual result
Output Indicator 1	Provide outreach activities and mass program to <b>4,500</b> ethnic minority (EM) community members	5,536 person-time
Output Indicator 2	<b>150</b> EM active substance abusers receive drug counselling (including assessment, treatment planning and treatment support)	411 person
Output Indicator 3	<b>450</b> EM ex-substance abusers receive relapse prevention counselling (including 150 EM rehabilitees carried from Indicator 2)	481 person
Output Indicator 4	Provide care to <b>90</b> EM substance abusers and care plan review to <b>270</b> (man-time) EM substance abusers under Community-based Treatment Support with Medical Supervision (I) & (II)	94 person, 270 man-times of review
Output Indicator 5	<b>360</b> (man-time) EM substance abusers / ex-substance abusers participate in Lifestyle Change programme and Pre-vocational training and Job matching	433 man-time

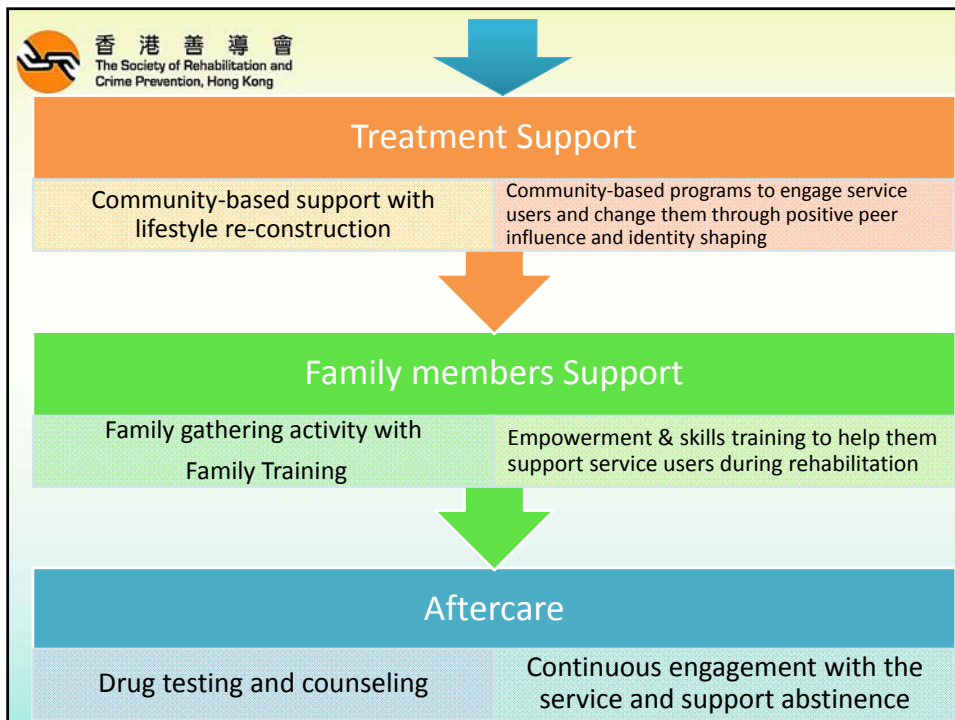
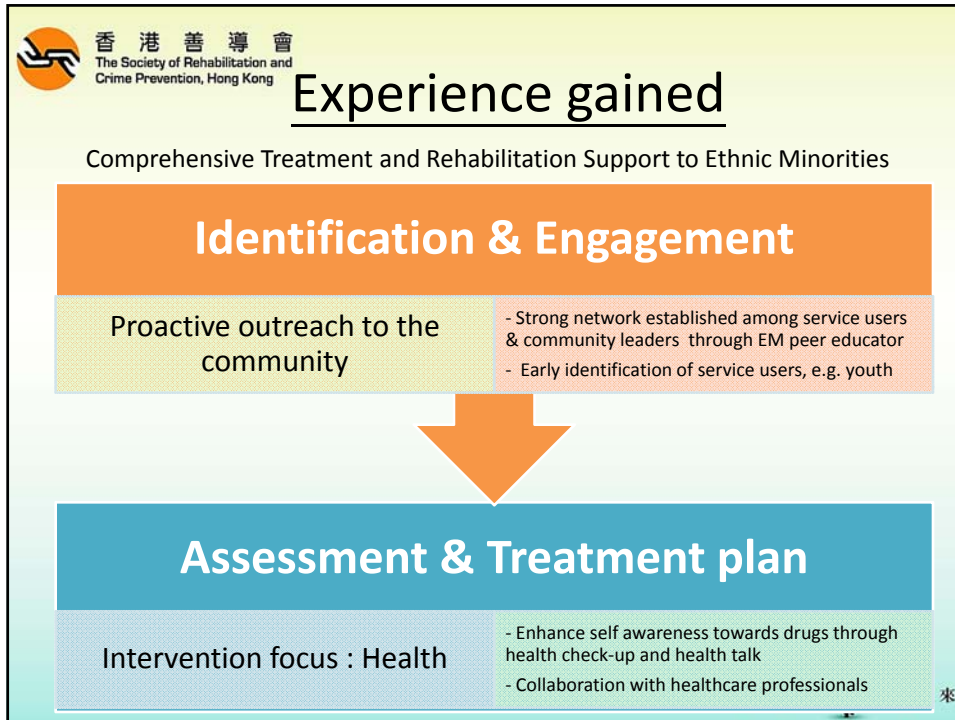

 改變本相 成就未來


**香港善導會**  
 The Society of Rehabilitation and  
 Crime Prevention, Hong Kong


## Evaluation results (Outcome indicator)

	Description of outcome indicators (with expected result)	Actual result
Outcome Indicator 1	40% of substance abusers comply to the post-detoxification medication and community medication plan prescribed by doctors	60 % (out of 90 respondents)
Outcome Indicator 2	40% of ex-substance abusers shows improvement in employment status after receiving social rehabilitation service	52 % (out of 62 respondents)


 改變本相 成就未來






 香港善導會  
The Society of Rehabilitation and  
Crime Prevention, Hong Kong

## Way forward

- Rising diversified situation in drug abuse, e.g. drug trend, drug complication, family members' support, etc
- Mixed drug using (Heroin and psychotropic drug use)
- drug induced psychosis
- Cross generation drug use problem

改變  本 相 成就 未 來

 香港善導會  
The Society of Rehabilitation and  
Crime Prevention, Hong Kong

## Recommendation

- Sustainable funding support
- Professional intervention
- Community participation

改變  本 相 成就 未 來

## Conclusion

- Important to provide cultural sensitive and comprehensive community-based treatment and rehabilitation support service to Ethnic Minorities
- Funding secured for continuation of project for 3 years